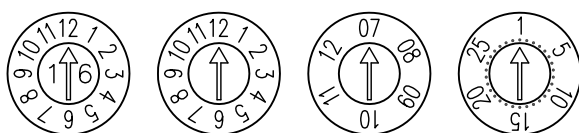
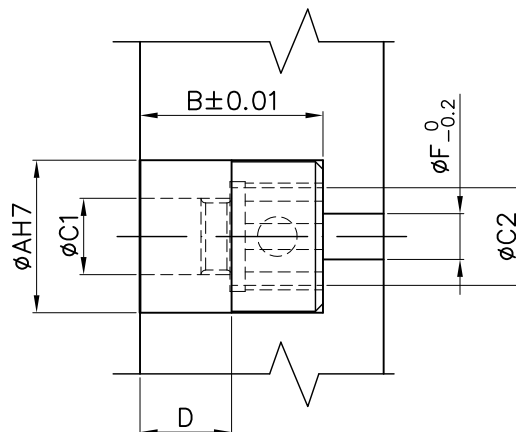
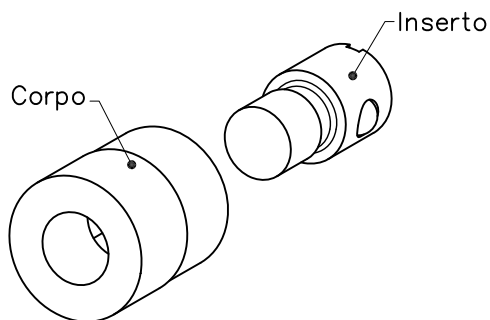


# DATARI A SFERA PER PLASTICA E PRESSOFUSIONE

## Date stamps for plastics and die-casting

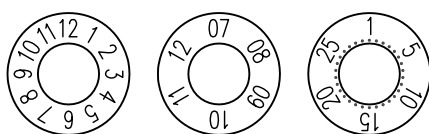
Datari per stampi ad iniezione e pressofusione, costruiti in acciaio 1.2083 rettificati e temperati 48/50 HRC

Date stamps for injection and die-casting moulds, They are completely made in ground and hardened 1.2083 steel with 48/50 HRC



Corpo		Inserto			
φA	B	φC1	φC2	D	φF
φ6	8	2.8	4.1	4	2
φ8	10	4	5.4	5.2	2.5
φ10	12	5	6.4	6	3.5
φ12	12	7	8.7	6	4.5
φ16	14	9	11.9	7	6
φ20	16	10.5	13.9	8	8
φ32	28	18	23.8	14	16

DATARIO				Date stamp
φ6	FDMA06	FDMF06	FDAF06	
φ8	FDMA08	FDMF08	FDAF08	
φ10	FDMA10	FDMF10	FDAF10	FDG10
φ12	FDMA12	FDMF12	FDAF12	FDG12
φ16	FDMA16	FDMF16	FDAF16	FDG16
φ20	FDMA20	FDMF20	FDAF20	FDG20
φ32	FDMA32	FDMF32	FDAF32	FDG32



CORPO			Body
φ6	RCM06	RCA06	
φ8	RCM08	RCA08	
φ10	RCM10	RCA10	RCG10
φ12	RCM12	RCA12	RCG12
φ16	RCM16	RCA16	RCG16
φ20	RCM20	RCA20	RCG20
φ32	RCM32	RCA32	RCG32

INSERTO		Insert
φ6	RIA06	RIF06
φ8	RIA08	RIF08
φ10	RIA10	RIF10
φ12	RIA12	RIF12
φ16	RIA16	RIF16
φ20	RIA20	RIF20
φ32	RIA32	RIF32

Su ordinazione possono essere forniti datari neutri non temperati e versioni speciali  
Neutral untempered date stamps and on request special versions can be supplied